

# SIM140301

## Output 3:

### Technology transfer on minimising seismic risk in the platinum mines

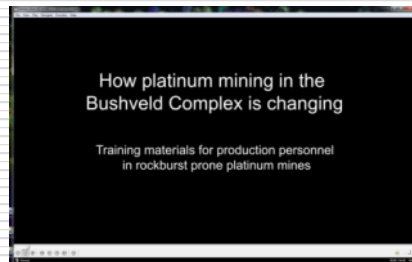
Friedemann Essrich  
MSc (Geoph), SiM Mining Consultants (Pty) Ltd.

Johan Hanekom  
MSc (Eng), Middindi Consulting (Pty) Ltd.



## Output 3

Facilitated roll-out of the production personnel training including train-the-trainer workshops on all mines with proven, expected or perceived seismic hazard.



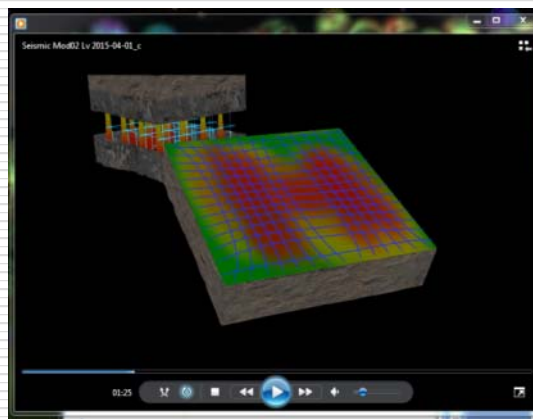
*Introduction*

- 12 animated training modules (3D)
- Introduction with user interface
- Installer with codec pack
- Summary module

# Modules 1-6



1. Geology



2. Stress



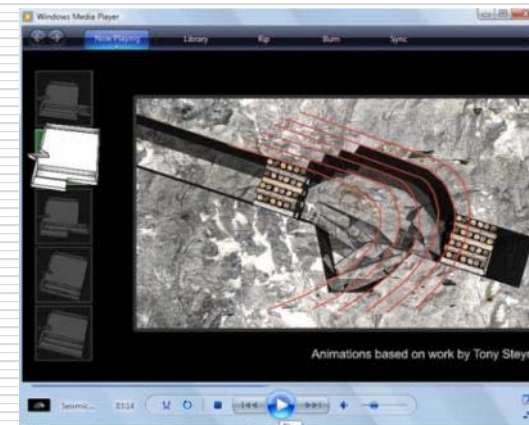
3. Seismic sources



4. Layout & sequence



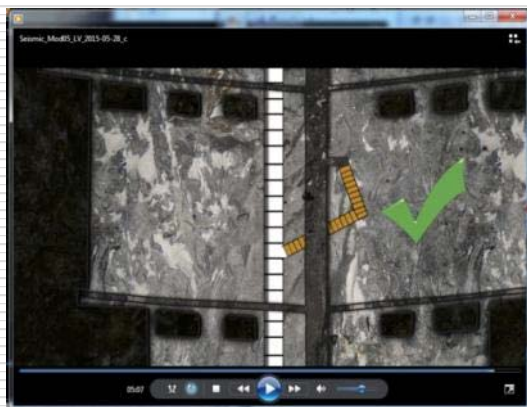
5. Mining practice (panel)



6. Gullies & sidings



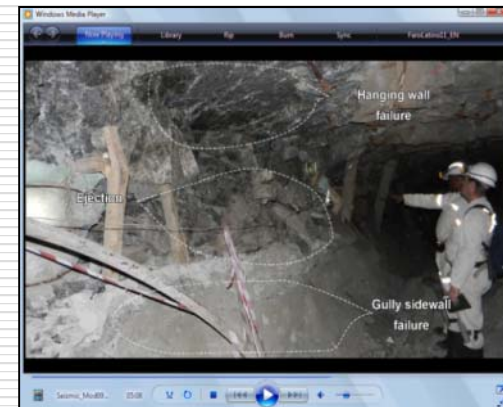
# Modules 7-12



7. Pillars



8. Seismic systems



9. Rockbursts



10. Rules



11. Seismic hazard & risk



12. Summary



## Workshops – Objectives

---

Inform mine personnel in charge of strata control training of the new animated training materials produced by SIM140301.

- Introduce strata control training staff to seismicity,
- Present animated modules,
- Provide instructions on use,
- Clarify rock engineering issues related to seismicity.

Note: *This workshop is aimed at trainers, not at general rock engineering and production personnel.*

## Workshops – Dates & Venues

---

### 1. Workshop for mines in the Thabazimbi/Northam area

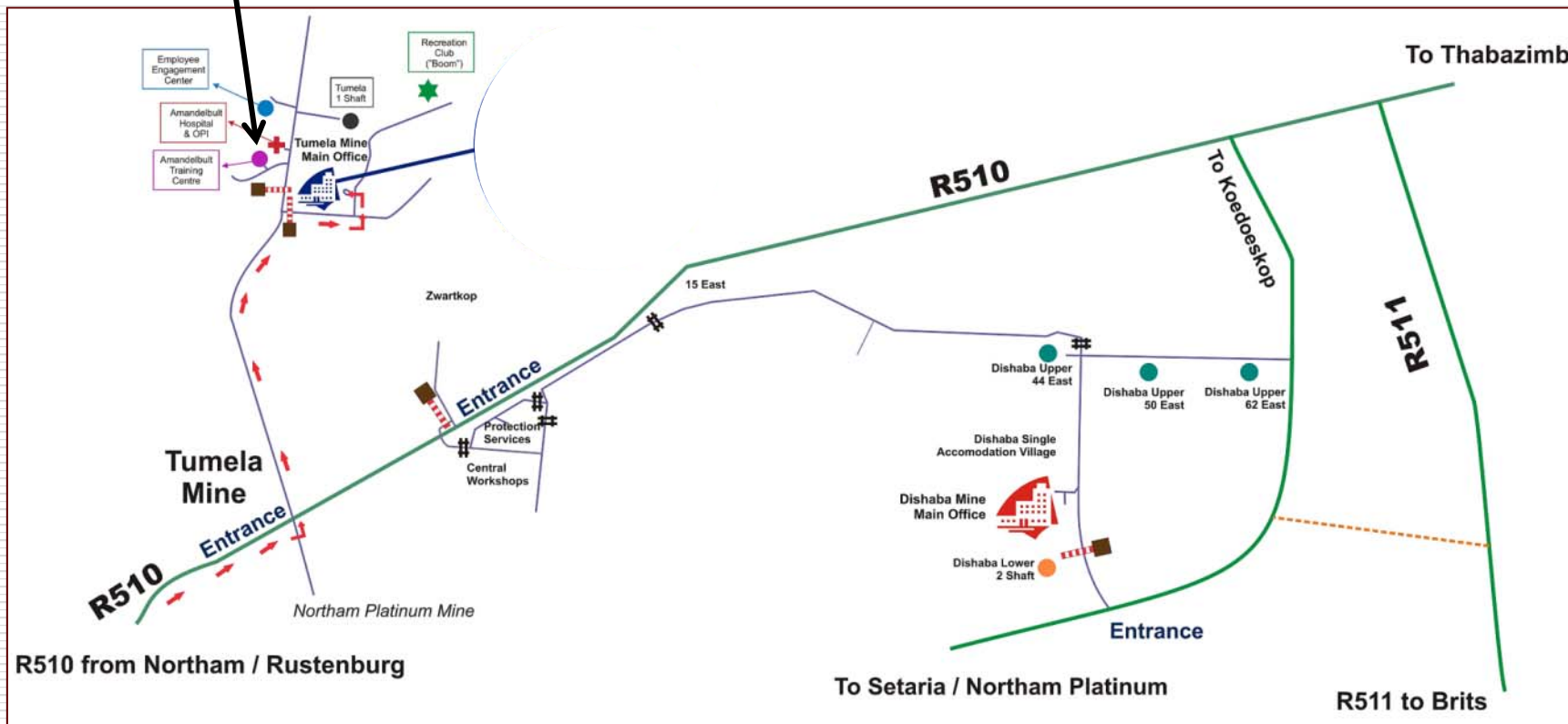
- Date: **5 November** 2015, **13h00-16h00**
- Venue: Tumela Mine Training Centre  
(See map on page 7)

### 2. Workshop for mines in the Rustenberg area

- Date: **6 November** 2015, **8h30-12h00**
- Venue: Impala Platinum Visitor Centre  
(See map on page 8)

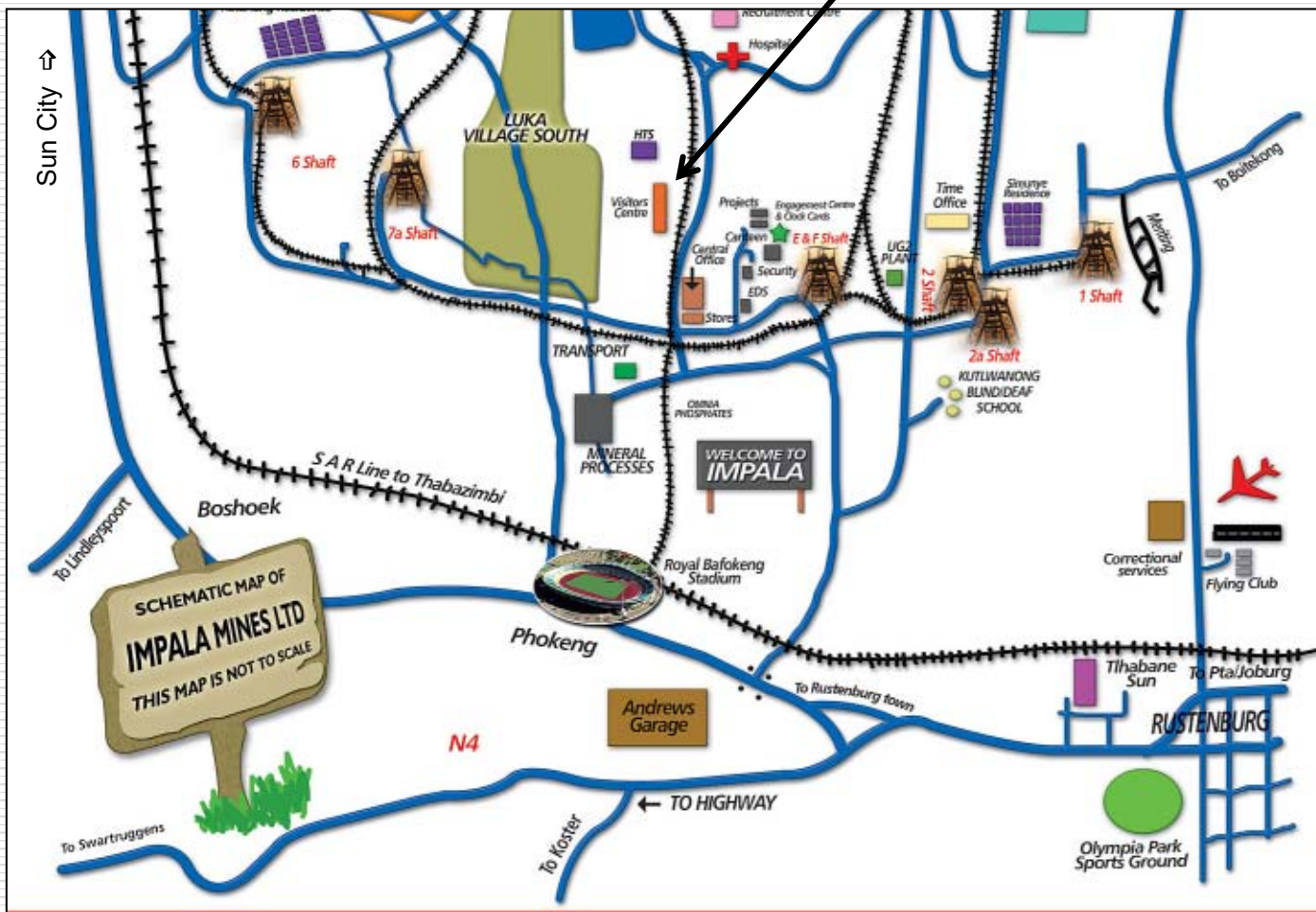
# Northam/Thabazimbi workshop – 5/11/2015

## Amandelbult Training Centre



# Rustenberg workshop – 6/11/2015

Impala Platinum Visitor Centre



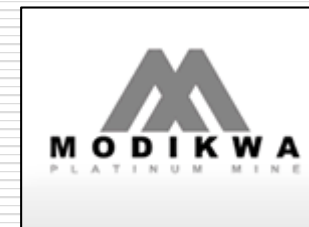
Middindi Consulting (Pty) Ltd  
Rock Engineering Geotechnics Geology

SiM Mining Consultants (Pty) Ltd.  
PO Box 11151 Riverwalk 2538  
T 018- 290 8302 [www.sim.co.za](http://www.sim.co.za)





# Stakeholder Mines - Eastern and Western Bushveld



## Acknowledgements

---

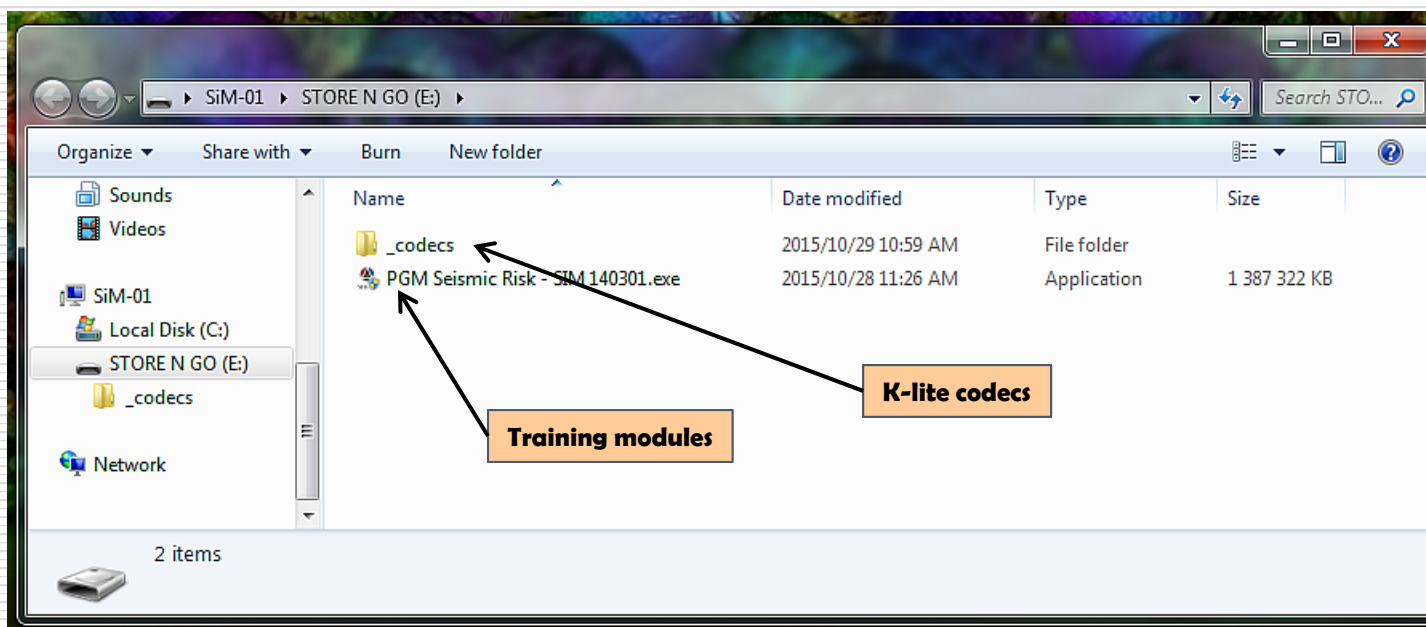


**Project funding is provided by the  
Mine Health and Safety Council  
under project number SIM140301**



## Installer

- ❑ Includes latest WIN Media player & K-lite codecs.
- ❑ Consult with IT regarding the installation.
- ❑ Suitable for WIN7, 8 and 10 (32-bit)



- ❑ Copy to Pc, then install (double-click on .EXE file)

# Installer

